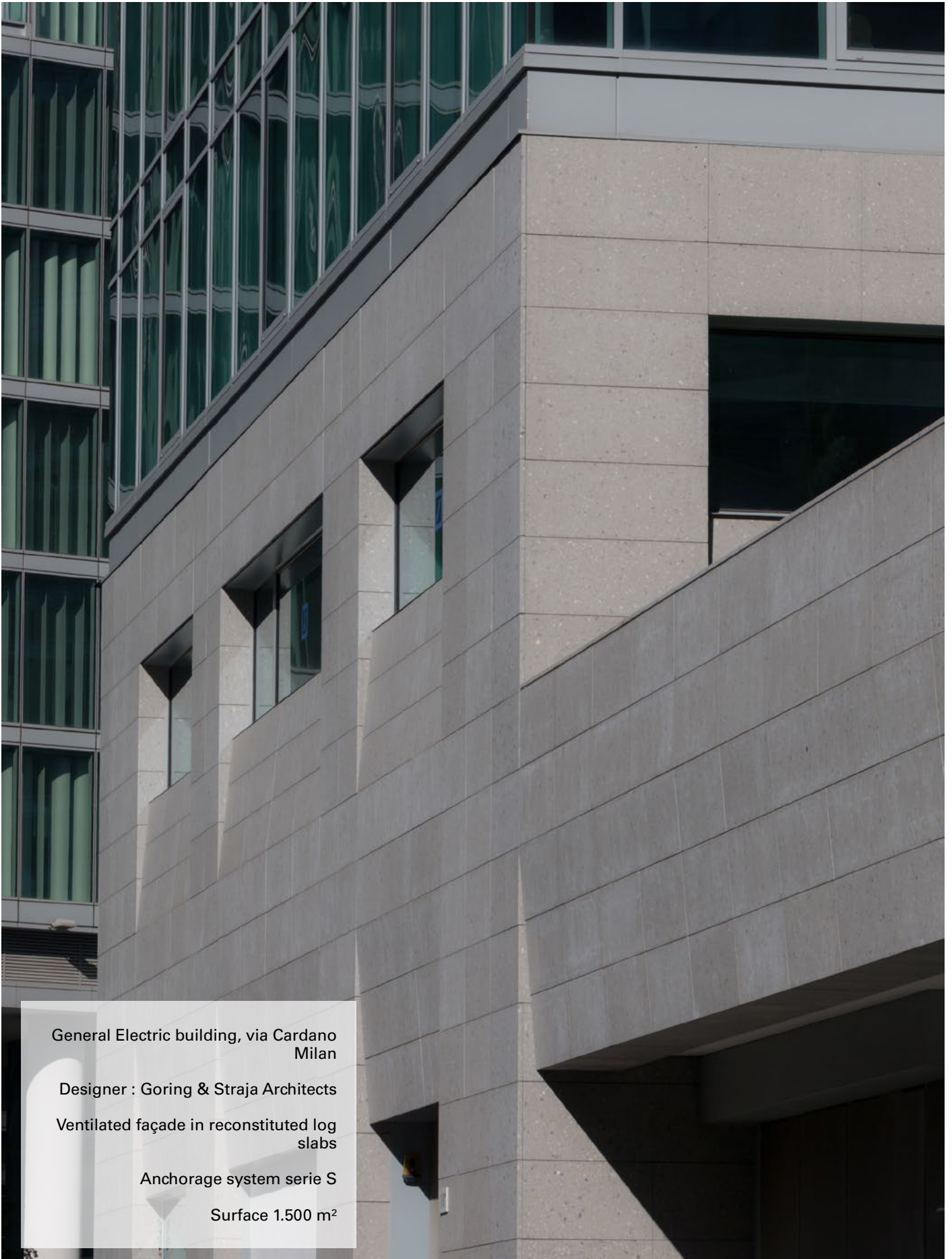


# Ventilated facades





General Electric building, via Cardano  
Milan

Designer : Goring & Straja Architects

Ventilated façade in reconstituted log  
slabs

Anchorage system serie S

Surface 1.500 m<sup>2</sup>



## 40 years of experience in ventilated façade anchoring system

Aderma brings to life turn-key projects of ventilated façades with all type of cladding panels and different materials: marble, granite, stone, brick tile, fibre concrete, extruded ceramic, grès, stoneware, photovoltaic panels, GRC, GRFC, WPC, HPL, etc. Aderma collaborates with the best cladding panel producers in Italy and in the world to help designers and architects to realize beautiful façade.

A ventilate façade produced by Aderma combines beauty, static resistance, security, safety, fire resistance, earthquake resistance, energy efficiency and all the best of the 'MADE IN ITALY'.

Aderma offers to its customers all the services to carry out a ventilated façade: design, static calculation, shop drawing, production of the anchoring system, supervision on building yard, installation by specialized workers and turnkey services. All Aderma employees are highly skilled professionals which guarantee the maximum quality in all the phases of the project.

Aderma is also able to support the customer in maintaining, cleaning, repairing a ventilated façade or a curtain wall. Aderma is able to study, design and install permanent access system for maintenance activity, too.

Operational headquarters  
AdermaLocatelli, Turate, Como

Ventilated façade in thin and large  
ceramic slabs

Anchorage system serie SK

Surface 1.000 m<sup>2</sup>





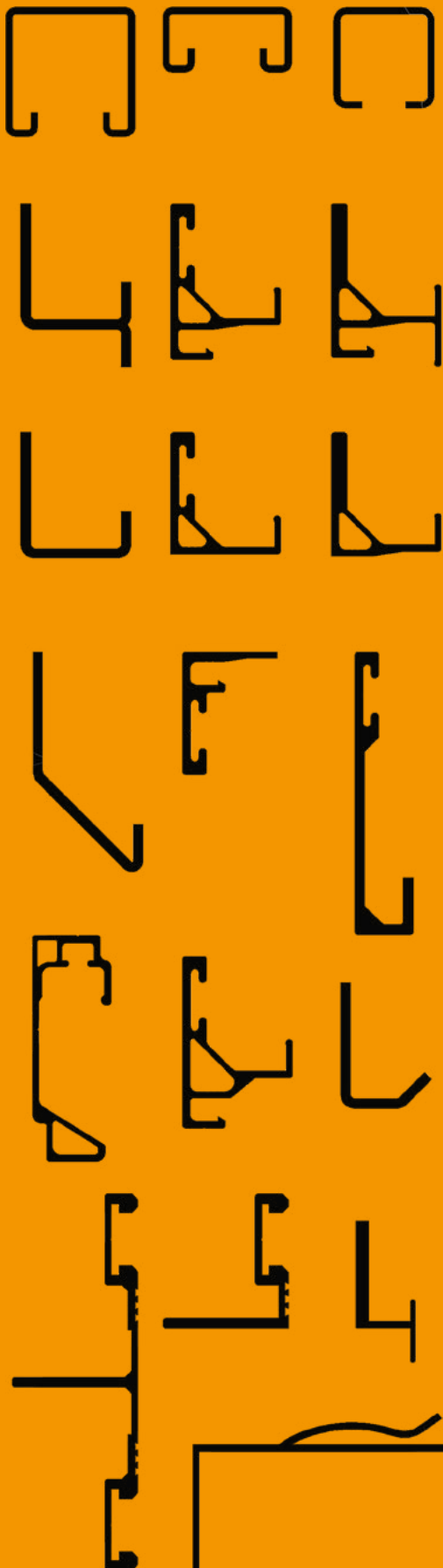
Villa Boradjauk , Mosca, Russia

Detail of the Aisi 304 stainless steel  
structure for supporting travertine  
slabs

Anchorage system serie MB

Surface 1.500 m<sup>2</sup>

## Anchoring systems



Aderma produces a big variety of anchoring systems for ventilated façade to be able to adapt to all the different kinds of cladding panels available on the market.

The historical standard products, still in production, come in carbon steel, galvanized or stainless steel.

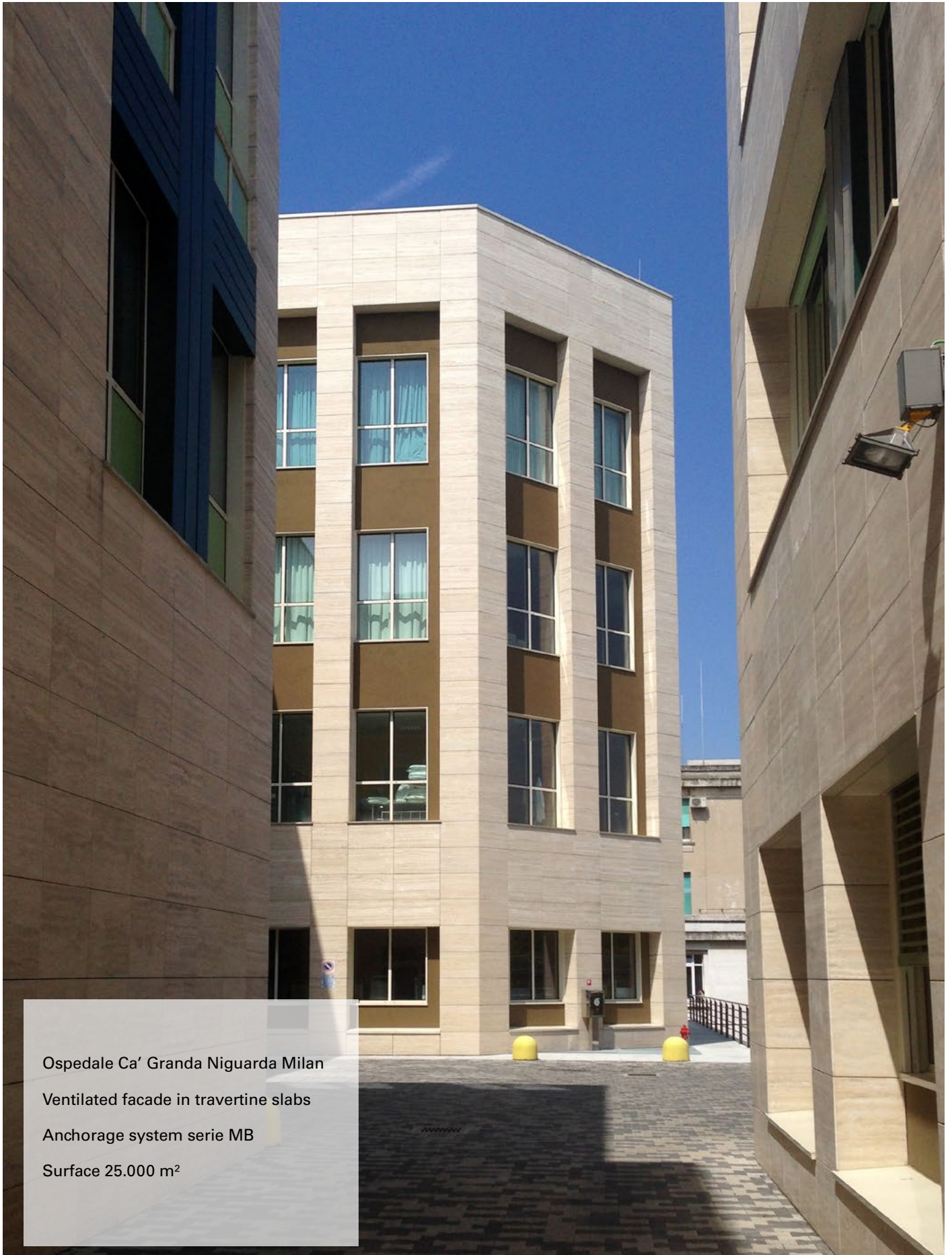
The new products, result of years of experience in the market, combines steel and aluminum.

Anchoring systems produced by Aderma combine different benefits: fast and simple to install, with easy maintenance (the systems are able to replace each single panel in the façade), adaptable to every kind of cladding panel: type, dimension and material.

All the anchoring systems offer millimetre regulation in the three axes to guarantee the perfect flatness of the surface.

Aderma anchoring system is also designed according to the new energy-efficiency regulation. The fixing system could be adapted to height thickness insulation and are specially designed to reduce the thermal bridge.





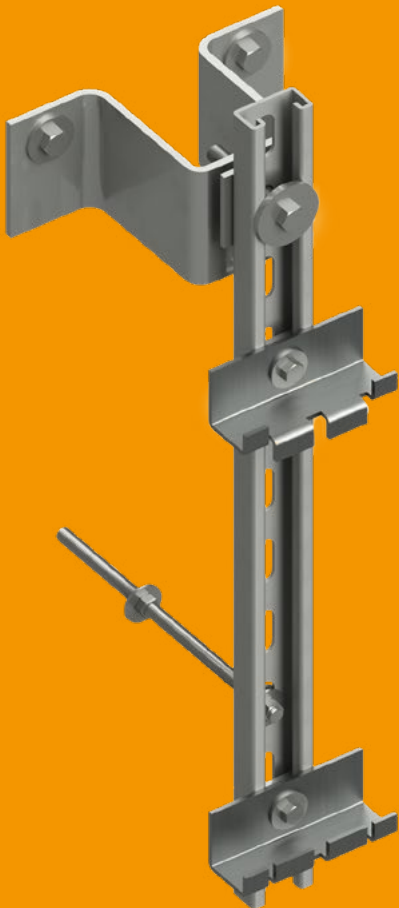
Ospedale Ca' Granda Niguarda Milan

Ventilated facade in travertine slabs

Anchorage system serie MB

Surface 25.000 m<sup>2</sup>

## Anchoring system series MB



This anchoring system is totally made of steel: galvanized or stainless.

The load bearing brackets type OMEGA are available in different dimensions according to the insulation thickness and the air gap between cladding and wall.

The vertical mullions are available in three different type and dimensions according to the project and the static calculation.

The cladding bracket type MB are produced in stainless steel AISI 304, AISI 316, AISI 430. They are also available in four different dimensions: 50 mm, 65 mm, 100 mm, 140 mm and in two different thickness 2 mm and 3 mm.

This anchoring system is the best solution for ventilated façade with aligned vertical joint.

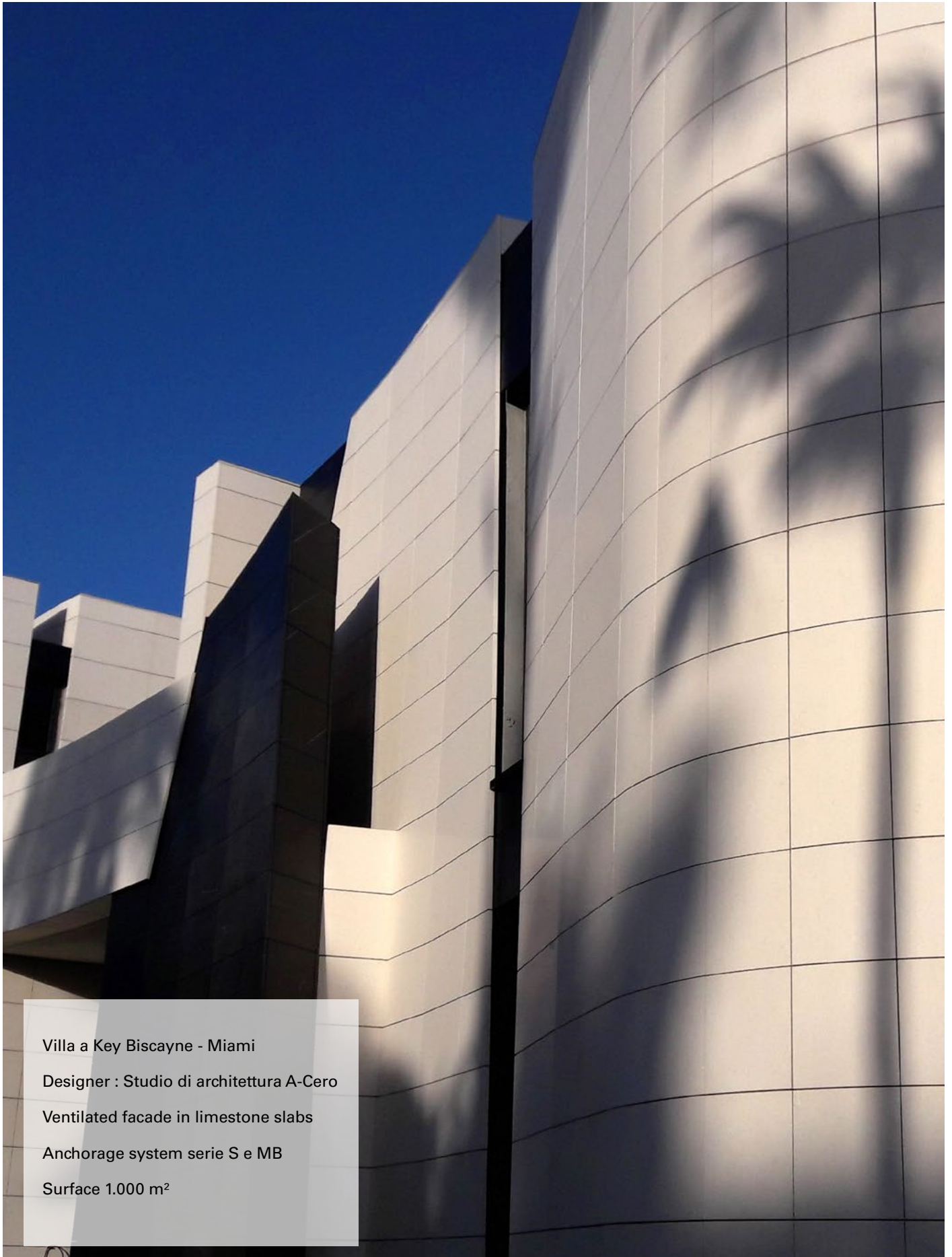


Stone and Composite Materials



Terracotta and Extruded ceramic





Villa a Key Biscayne - Miami  
Designer : Studio di architettura A-Cero  
Ventilated facade in limestone slabs  
Anchorage system serie S e MB  
Surface 1.000 m<sup>2</sup>



## Anchoring system

### series AB

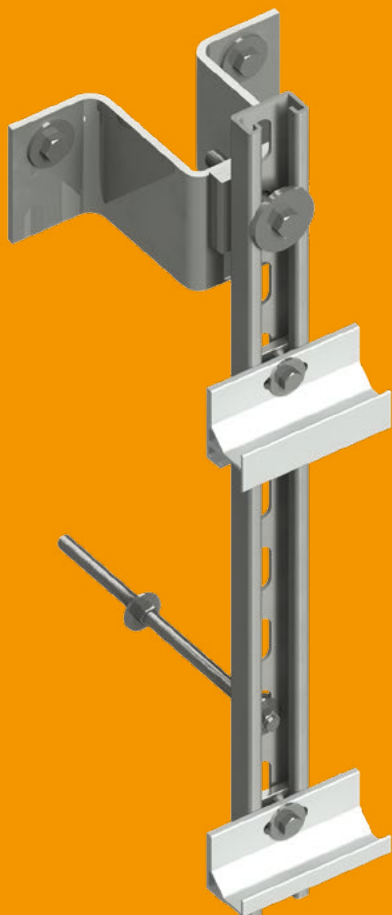


This anchoring system is made of steel (galvanized or stainless) for the vertical mullion and aluminium for the cladding brackets.

The vertical mullions are available in three different types and dimensions according to the project and the static calculation.

The cladding brackets type AB are produced in aluminum EN AW 6060 T6. They are also available in three different dimensions: 50 mm, 100 mm, 150 mm and in two different colours, i.e. natural grey or anodized black.

The main feature of these brackets is the easiness of substitution of each cladding tile. Moreover, this system is the best solution for ventilated façade with aligned vertical joint.



Stone and Composite Materials



Terracotta and Extruded ceramic



Operational headquarters  
La Rinascente, via Santa Radegonda,  
Milan

Designer : Dordoni Architetti

Ventilated façade in travertine slabs

Anchorage system serie KB

Surface 500 m<sup>2</sup>



## Anchoring system

### series KB

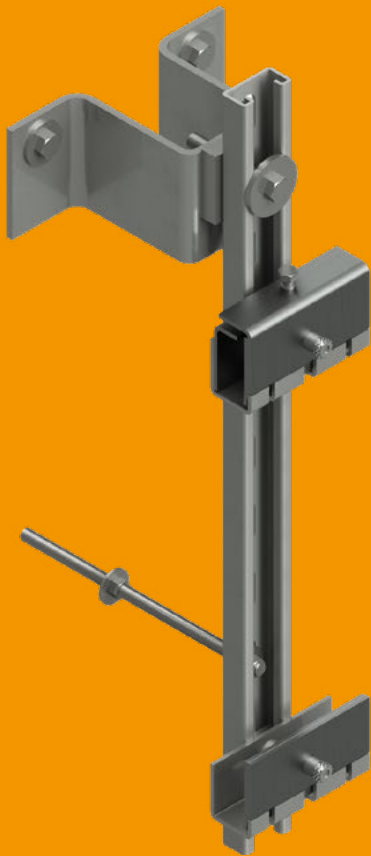


This anchoring system is totally made of steel: galvanized or stainless.

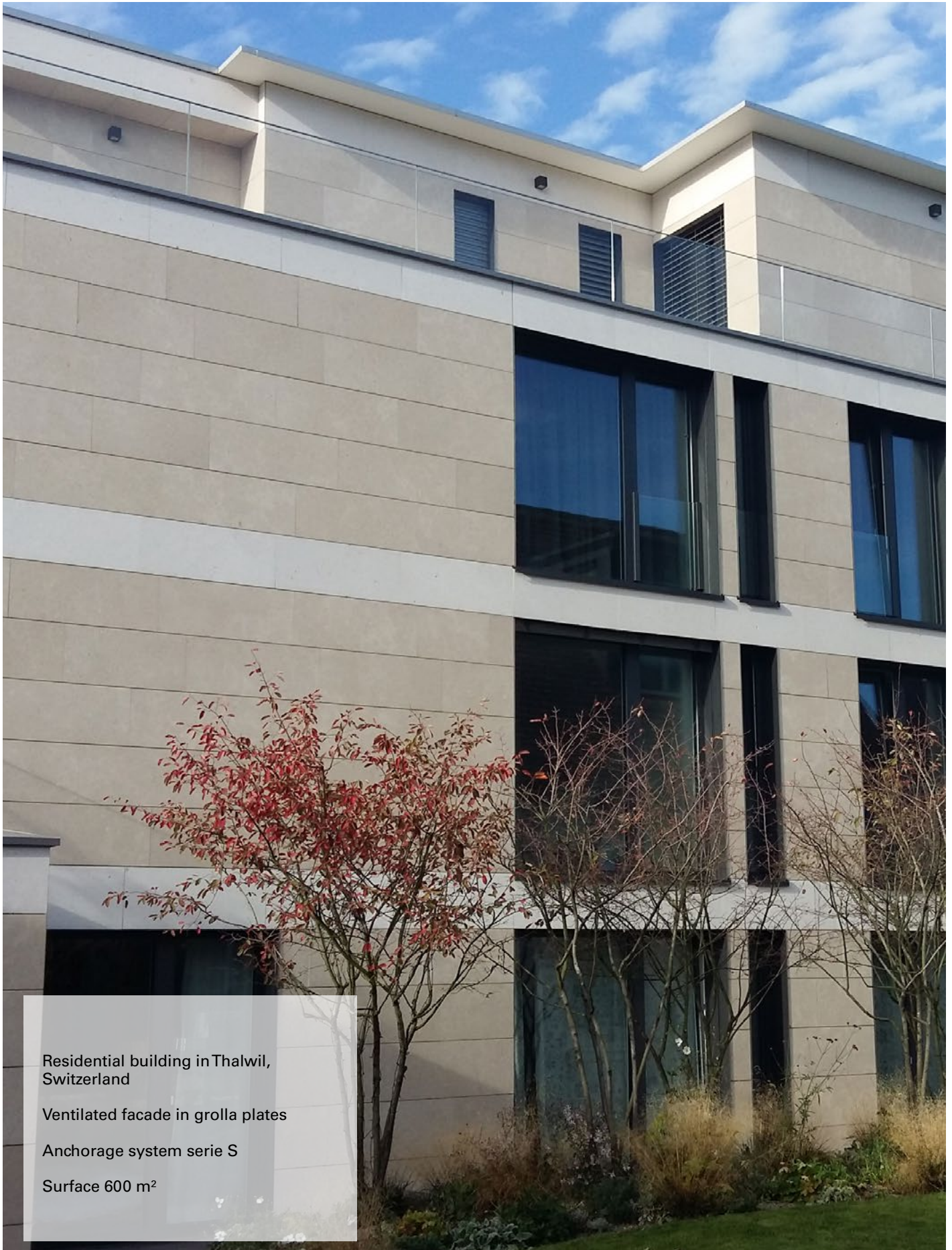
The vertical mullions are available in three different types and dimensions according to the project and the static calculation.

The cladding brackets type KB are produced in Stainless steel AISI 304.

This anchoring system is the best solution for ventilated façade with heavy cladding panels and with big dimensions in which it is possible to insert the special dowels on the back.



-  Pietra e Ricomposti
-  Porcelain and Ceramic
-  HPL and Fiber-cement
-  GRC and GRFC



Residential building in Thalwil,  
Switzerland

Ventilated facade in grolla plates

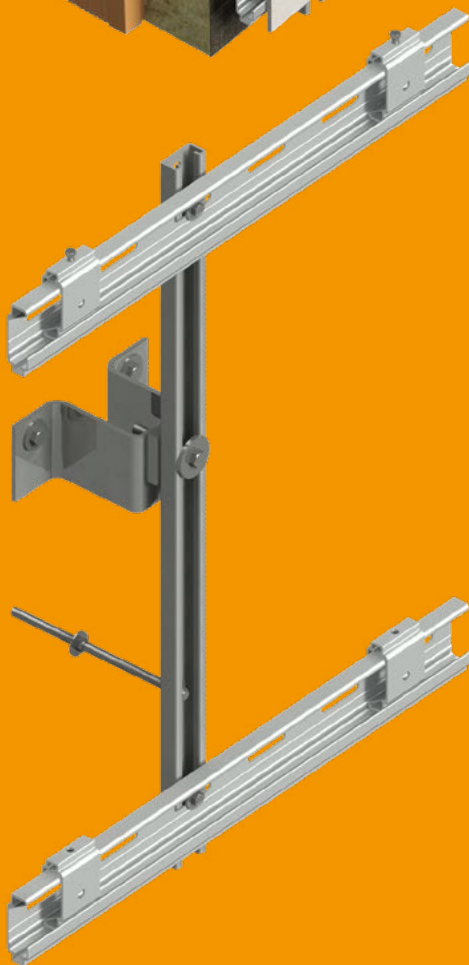
Anchorage system serie S

Surface 600 m<sup>2</sup>



## Anchoring system

### series C



This anchoring system is made of steel (galvanized or stainless) for the vertical mullions and aluminum for the horizontal profiles and brackets.

The horizontal profiles type C are produced in aluminum EN AW 6060 T6. They are also available in two different colours, natural grey or anodized black. The vertical mullions are available in three different types and dimensions according to the project and the static calculation. It's also available a version with aluminum vertical mullions.

In order to use this anchoring system, it is necessary to connect some special cladding brackets on the back side of the panel. The brackets are especially designed to allow the millimetre alignment of each cladding panel. This anchoring system is the best solution for ventilated façade with thin cladding panels and with big dimensions in which it is possible to insert the special dowels on the back.



Stone and Composite Materials



Porcelain and Ceramic



HPL and Fiber-cement



GRC and GRFC



Residential complex Porta Vittoria,  
Milan

Designer Fabio Nonis Architects

Ventilated facade in limestone slabs

Anchorage system serie S

Surface 15.000 m<sup>2</sup>



## Anchoring system

### series S



This anchoring system is made of steel (galvanized or stainless) for the vertical mullions and aluminum for the horizontal profiles.

The vertical mullions are available in three different types and dimensions according to the project and the static calculation.

The horizontal profiles type S are produced in aluminum EN AW 6060 T6. They are also available in different type S1, S2, S3, S4 and in two different colours, natural grey or anodized black.

This anchoring system is especially designed to allow a fast connection of the cladding panel. This anchoring system is designed to allow the independent installation or dismantle of any cladding panel by means of a special pop-out clip.

This anchoring system is the best solution for ventilated façade with misaligned vertical joint.



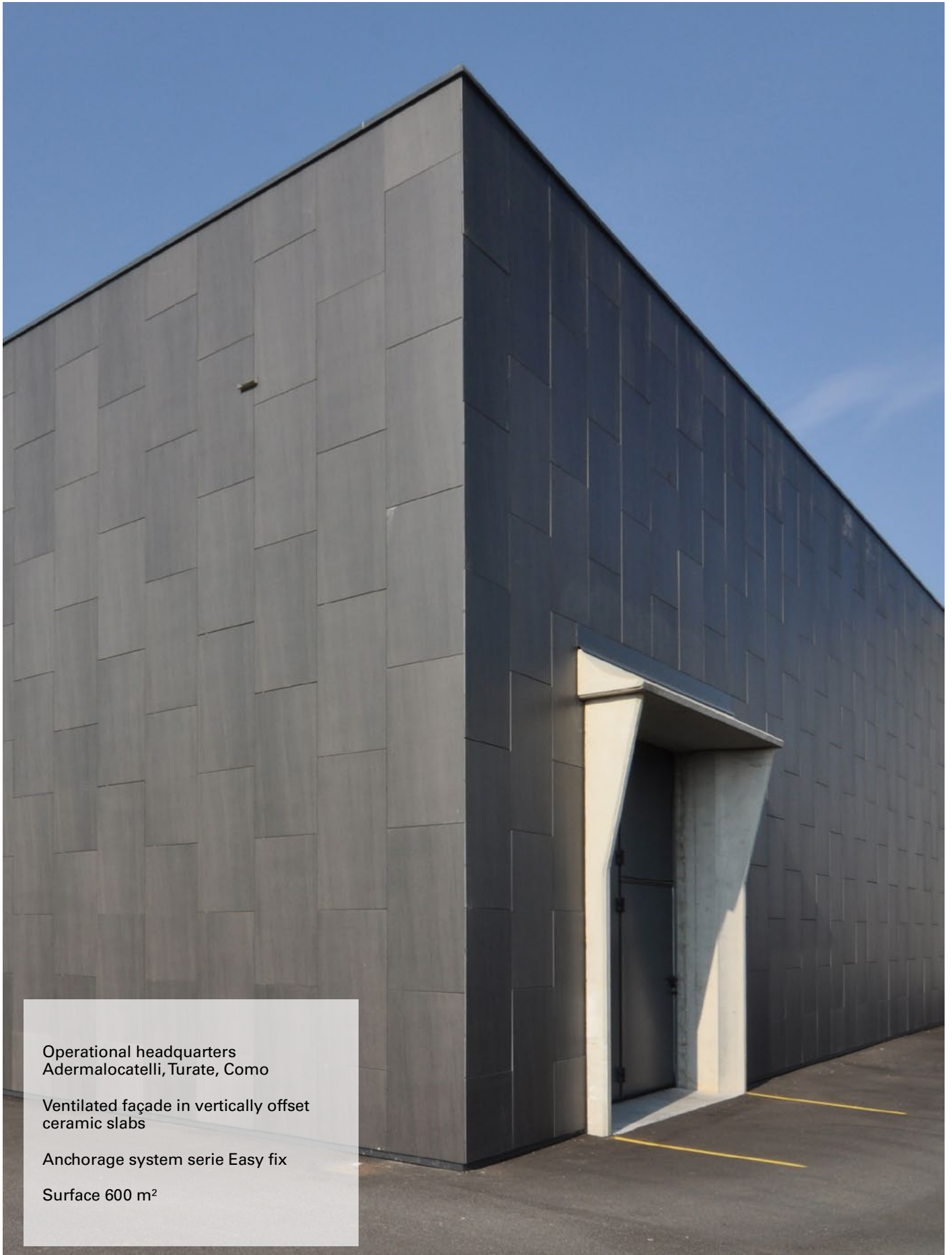
Stone and Composite Materials



Terracotta and Extruded ceramic



GRC and GRFC



Operational headquarters  
Adermalocatelli, Turate, Como

Ventilated façade in vertically offset  
ceramic slabs

Anchorage system serie Easy fix

Surface 600 m<sup>2</sup>





## Anchoring system

### series EASY FIX

This anchoring system is based on horizontal profile.

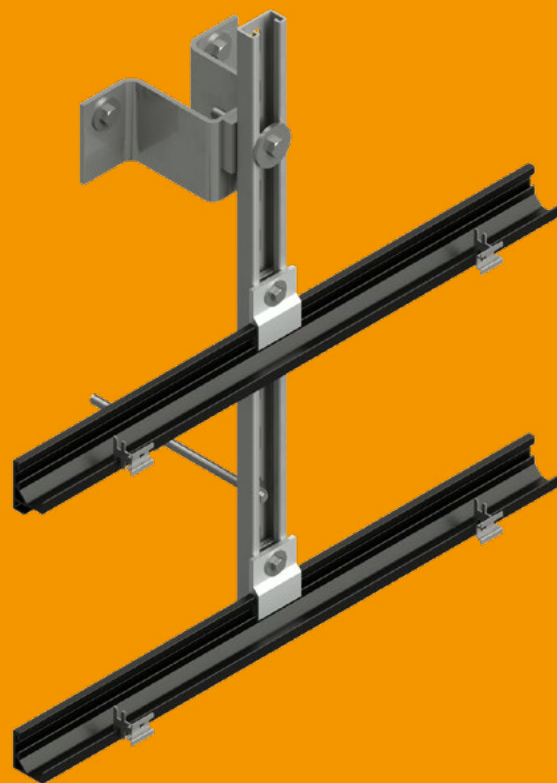
This anchoring system is specially designed to allow the fixing of the cladding panel by means of a special clip. The clips type EASY FIX are inserted in special cuts carried out along the two lateral sides of the panel. With this special clip it is possible to hang the panel on the horizontal profile type S3.

This anchoring system is designed to allow the independent installation or dismantle of any panel.

The vertical mullions are available in three different types and dimensions according to the project and the static calculation.

The horizontal profiles type S3 are produced in aluminium EN AW 6060 T6. They are also available in two different colours, natural grey or anodized black.

This anchoring system is the best solution for ventilated façade in thin ceramic or thin stone or for every type of cladding where it is not possible to realize a groove, so called "kerf" for the fixing.



Stone and Composite Materials



Porcelain and Ceramic



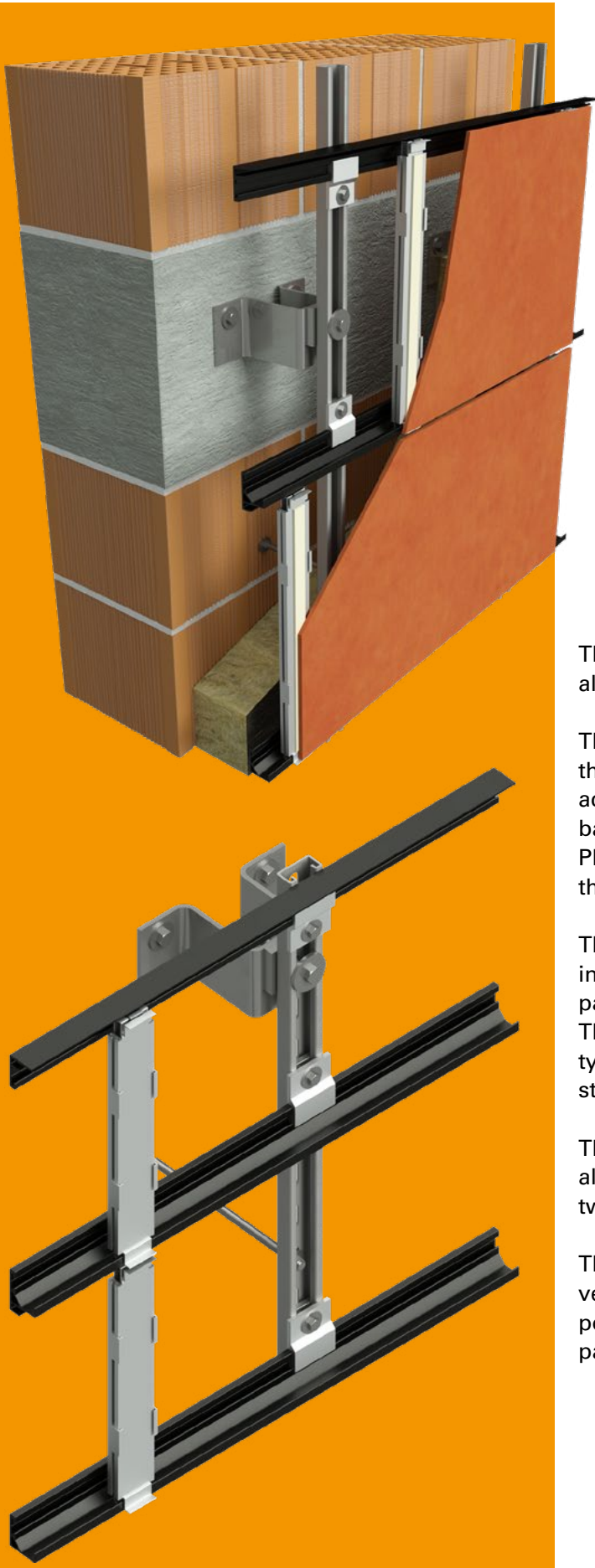
Operational headquarters  
AdermaLocatelli, Turate, Como

Ventilated façade in thin and large  
ceramic slabs

Anchorage system serie SK

Surface 1.000 m<sup>2</sup>





## Anchoring system

### series SK

This anchoring system consists of a frame in aluminum.



The tubular profiles type SK1 will be applied on the back side of the panel by means of a structural adhesive type Sikatack Panel. On the top and on the base of the profile the plates PK1 will be fixed by rivet. Plates PK1 have a groove to allow the connection with the profile and series S clips.

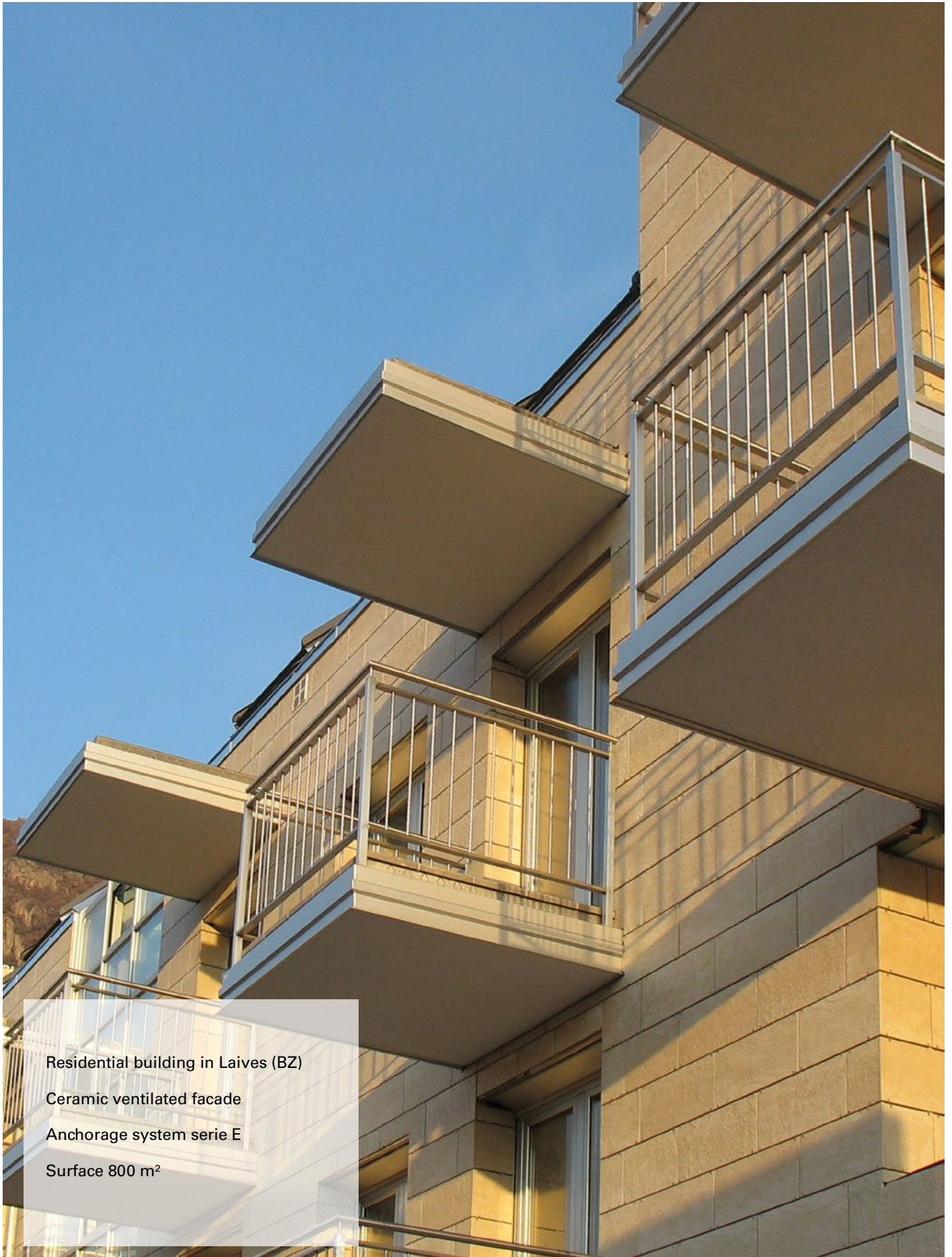
This anchoring system is designed to allow the independent installation or dismantle of each single panel.

The vertical mullions are available in three different type and dimension according to the project and the static calculation.

The horizontal profiles type S are produced in aluminum EN AW 6060 T6. They are also available in two different colours natural grey or anodized black.

This anchoring system is the best solution for ventilated façade in thin panel, panel where is not possible to realize a groove "kerf" for the fixing or panel cannot be drilled.

-  Porcelain and Ceramic
-  HPL and Fiber-cement

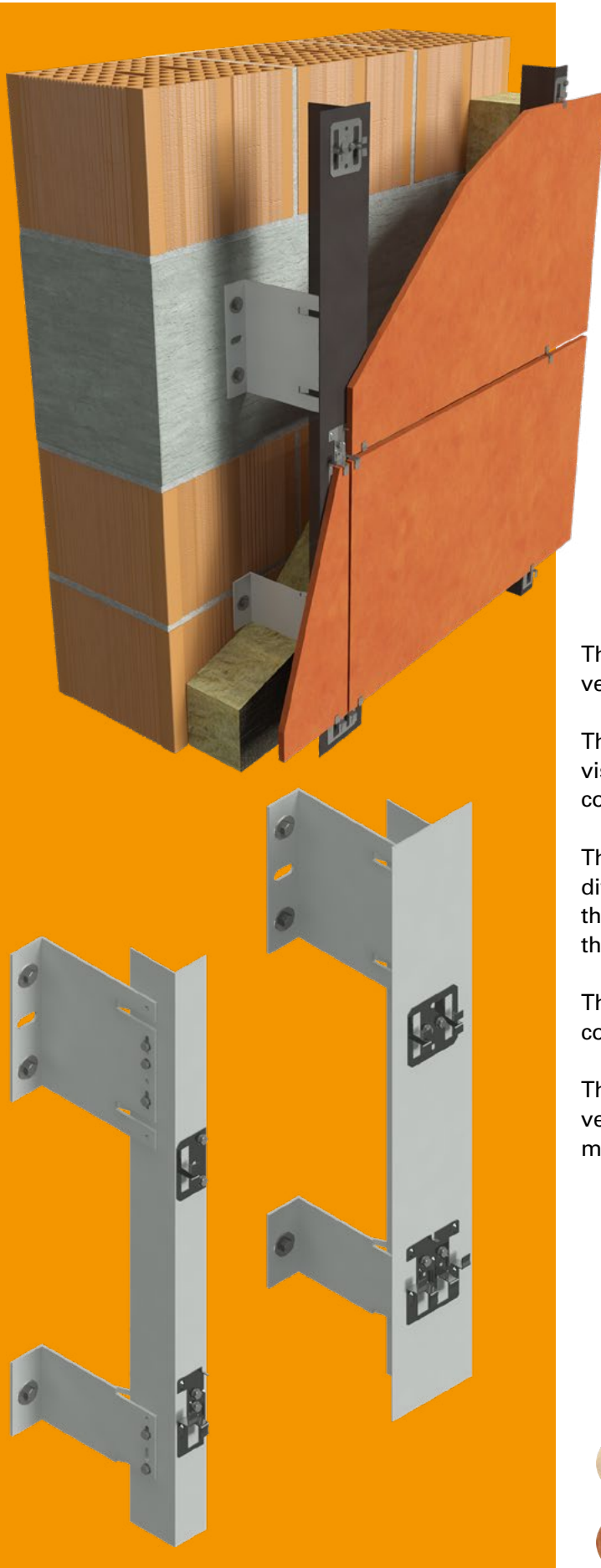


Residential building in Laives (BZ)  
Ceramic ventilated facade  
Anchorage system serie E  
Surface 800 m<sup>2</sup>



## Anchoring system

### serie E



This anchoring system is built in aluminum for the vertical mullion and stainless steel for the clip.

The panel are fixed by means of a clip. The clips are visible and they can be painted according to the panel colour.

The load bearing bracket type L are available in different dimensions according to the insulation thickness and the air gap between the cladding and the wall.

The vertical mullions are available in two different colours, natural grey or black anodized.

This anchoring system is the best solution for ventilated façade in thin panels with small and medium dimensions.



Porcelain and Ceramic



HPL and Fiber-cement



Nursery school - via Brivio,8 - Milan

Designer Architects : Enrico Boccardo,  
Emilio Pizzi , Ettore Zambelli

Ventilated façade in extruded ceramic  
and fiber cement slabs

Anchorage system serie R

Surface 800 m²



## Anchoring system

### serie R



This anchoring system is totally made of aluminum EN AW 6060 T6.

The panel are fixed by means of rivets. The rivets are visible and they can be painted according to the panel colour.

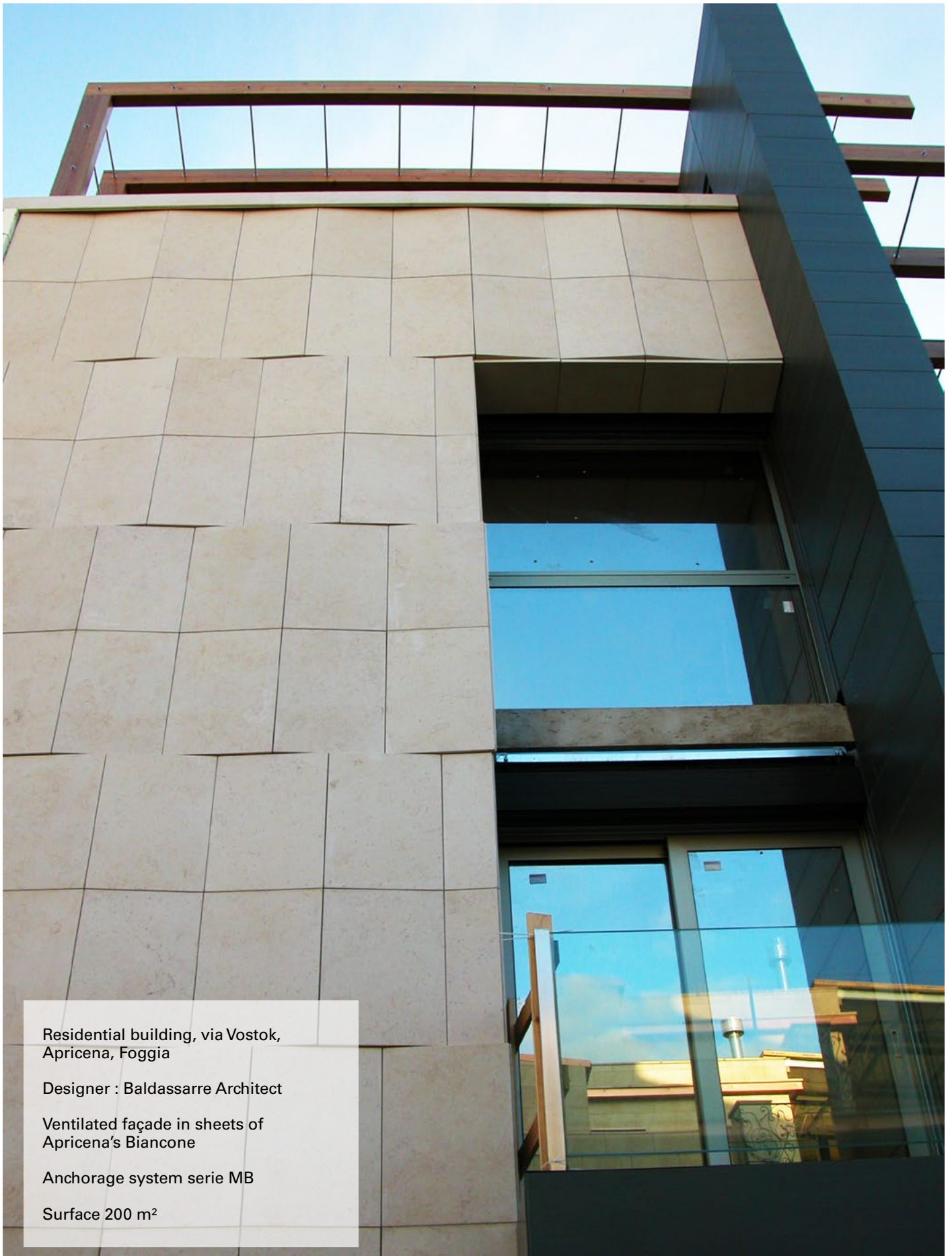
The load bearing bracket type L are available in different dimension according to the insulation thickness and the air gap between the cladding and the wall.

The vertical mullions are available in two different colours, natural grey or black anodized.

This anchoring system is the best solution for ventilated façade in thin panels with big dimensions. The panels must be drilled.



HPL and Fiber-cement



Residential building, via Vostok,  
Apricena, Foggia

Designer : Baldassarre Architect

Ventilated façade in sheets of  
Apricena's Biancone

Anchorage system serie MB

Surface 200 m<sup>2</sup>





## Anchoring system

### serie I

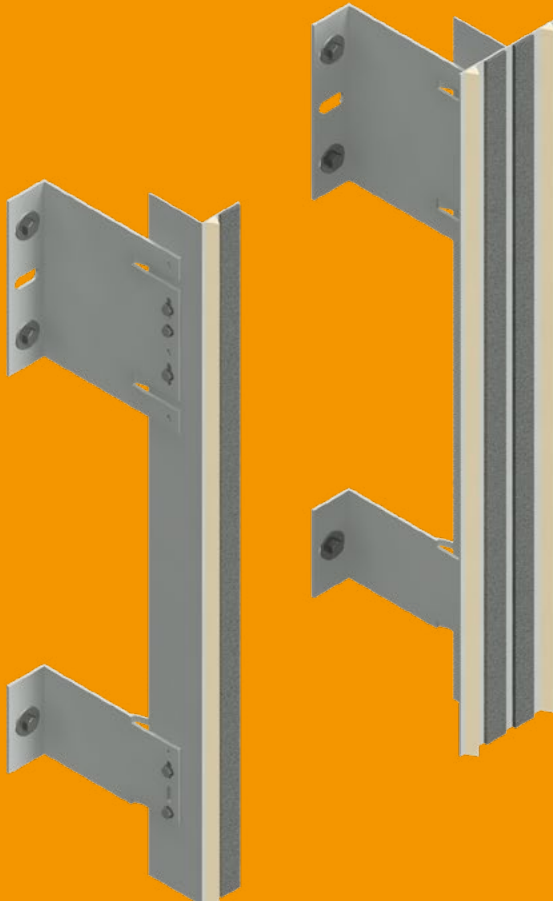
This anchoring system is totally made of aluminum EN AW 6060 T6.

The panel are fixed by means of adhesive Sikatack Panel.

The load bearing brackets type L are available in different dimensions according to the insulation thickness and the air gap between the cladding and the wall.

The vertical mullions are available in two different colours, natural grey or black anodized.

This anchoring system is the best solution for ventilated façade in thin panels where it is not possible a mechanical fixing. A safety mechanical system must be assessed according to the type of the cladding tile and the height of the cladding.



Porcelain and Ceramic



HPL and Fiber-cement



Campus Humanitas University  
Rozzano (MI)

Designer : Filippo Taidelli Architect  
Studio FTA

Ventilated façade in Grès slabs

Anchorage system serie H

Surface 6.000 m<sup>2</sup>



## Anchoring system

### serie H



This anchoring system is totally made of aluminum EN AW 6060 T6.

The panel are fixed by means of an aluminum clip. The fixing clip could be visible from outside with panel having a thickness of less than 10mm.

With panel having a thickness higher than 10 mm it is possible to make the fixing along the sides of the cladding. In order to do that it is necessary to make a groove on the upper and lower sides of the panel. In this way the fixing is invisible.

The load bearing brackets type L are available in different dimensions according to the insulation thickness and the air gap between the cladding and the wall.

The vertical mullions are available in two different colours natural grey or black anodized.

This anchoring system is the best solution for ventilated façade in thin panels with small dimensions.



Stone and Composite Materials



Porcelain and Ceramic



Terracotta and Extruded ceramic





Operational headquarters  
Sella Bank- Biella

Designer : FBdA Archicura

Ventilated brick façade Face-to-face  
and terracotta sunblinds

Anchorage system GL Brick and  
sunblinds

Surface 6.000 m<sup>2</sup>



## CERTIFIED QUALITY



Aderma is quality certified according to the standards UNI EN ISO 9001:2015 related to these activities:  
"Design and installation of ventilated façades, design and installation of anchoring systems, design and installation of access systems"

SOA Certification OS18 class II. SOA is a certificate issued from the Italian government to proof that Aderma is authorized to do ventilated façade for public buildings for more than 1 000 000 €. been manufactured in accordance with EU legislation.

Aderma is partner of UNICMI trade association of Metal Constructions, Building Envelope and Frame Manufacturers.

Aderma anchoring systems are CE marked. Products bearing CE mark are considered safe because they have



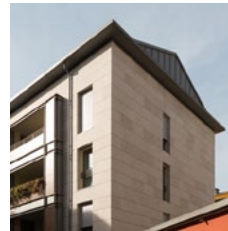




Mantova-Porta Cerese



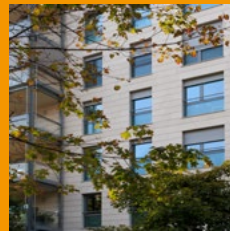
Macherio-Esselunga



Milano-Via Tortona



Sudan-Khartoum  
Hotel



Milan-Via Tiraboschi



Parma-Università



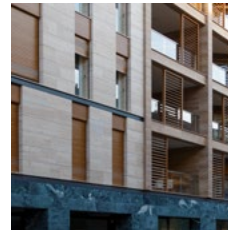
Lecco - Camera di  
Commercio



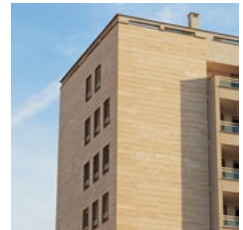
Parma-STU Station



Rome- Palazzo Italia



Milan-Via Poma



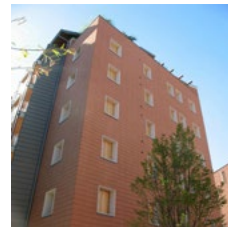
Milan-Via Maestri  
Campionesi



San Donato Milanese  
Policlinico Hospital



Milan-Via Savona



Pordenone-Residenze  
Il Bosco



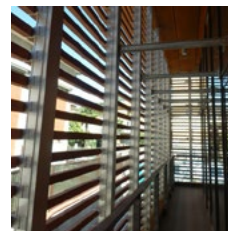
Milan - Procaccini  
Center



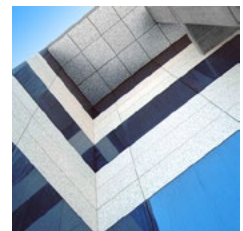
House of Stone



Milan Porta Nuova  
Garibaldi



Varese-Aler



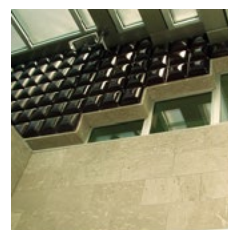
Mestre-Hotel



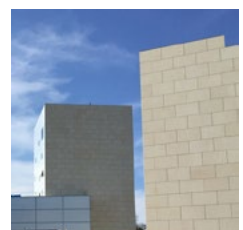
Italy Pasta Factory  
De Cecco



Barruccana di Seveso-  
Church



Piacenza-Esselunga



USA-Princeton  
University

## References



Aderma s.r.l.

Via Dante Alighieri, 66  
22078 Turate (CO) - Italy  
tel +39 02 9648 07 21  
fax +39 02 968 27 95

[info@aderma.it](mailto:info@aderma.it)  
[www.adermalocatelli.it](http://www.adermalocatelli.it)