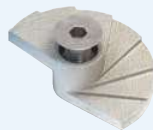


The Grate-Fast® is used to quickly connect open bar grating from above, reducing time and labour costs (see page 50).

Floor Fixings

A range of innovative fixings for securing steel flooring to the supporting steelwork without the need for on-site drilling or welding. Access to the underside of the flooring is not required, eliminating the need for costly scaffolding or elevated floors. Installation can be carried out quickly and safely from above, often by one person, significantly reducing costs.

**Type FF
FloorFast®**
page 49



**Type GF
Grate-Fast®**
page 50

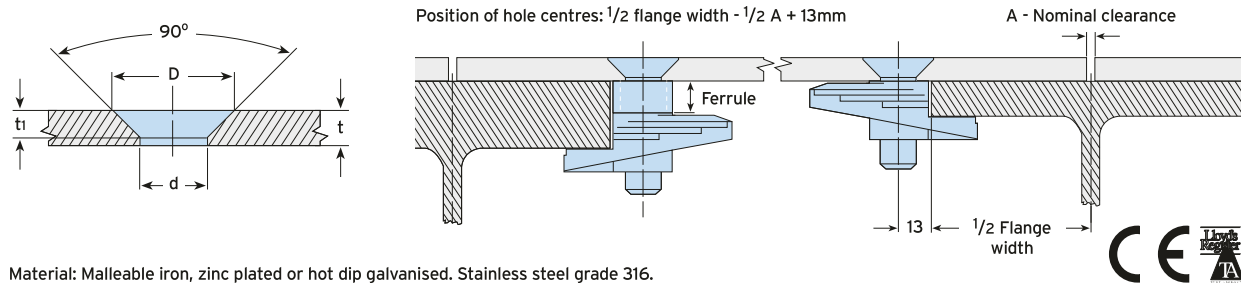
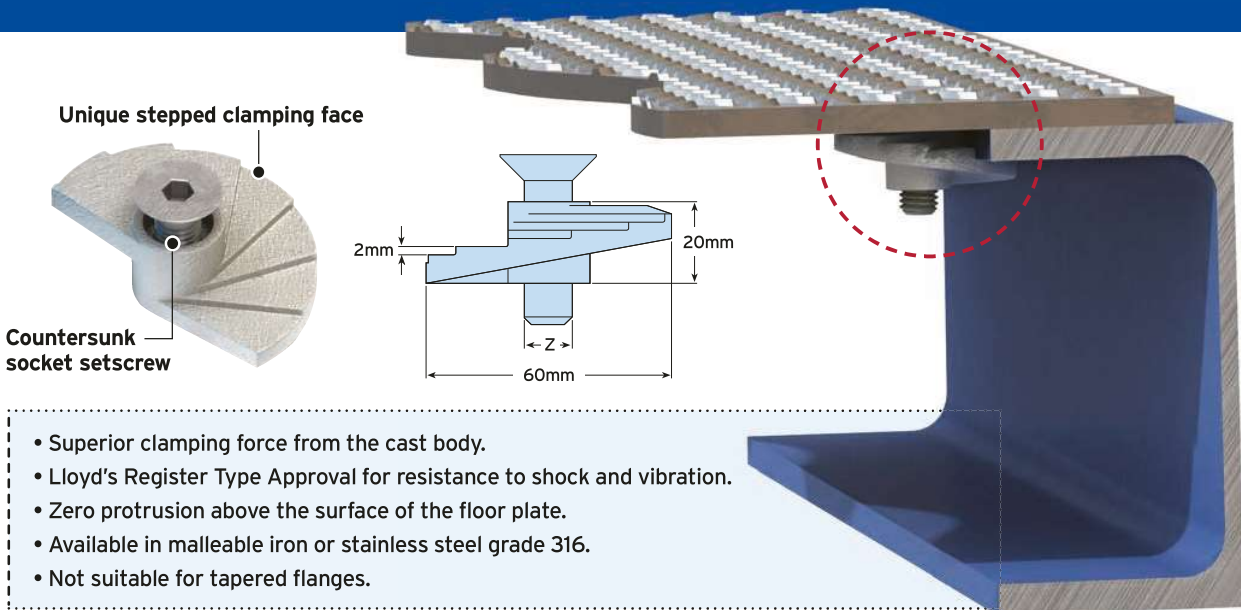


**Type
1055**
page 51



Type FF - FloorFast®

Securing chequer plate flooring to supporting steelwork can be carried out quickly and safely from above, often by one person, significantly reducing costs. The stepped clamping face locks under the steelwork to provide a secure connection.



Material: Malleable iron, zinc plated or hot dip galvanised. Stainless steel grade 316.

Code	Bolt min 4.6 ¹⁾ Z	Floorplate Thickness t mm	Standard - mm	Flange Thickness With Ferrule ²⁾			Hole Ø d mm	Dimensions				Tightening Torque Nm	Hexagon Key mm
				10 mm	20 mm	30 mm		Countersunk Ø for Bolt		Countersunk Depth for Bolt			
								BZP D mm	HDG D mm	BZP t _i mm	HDG t _i mm		
FF08	M8	4.5 - 12	3 - 15	13 - 25	23 - 35	33 - 45	9	17	-	4	-	11	5
FF10	M10	5 - 12	3 - 15	13 - 25	23 - 35	33 - 45	11	21	19	5	4	22	6
FF12	M12	6 - 12	3 - 15	13 - 25	23 - 35	33 - 45	13.5	25	23	5.8	4.8	22	8

1) Hot dip galvanised M10 and M12 versions are supplied with a slotted countersunk screw.

2) To order FloorFast with a ferrule, simply add ferrule size to product code.

➤ Designed for pedestrian walkways only.

How to install...

- 1) Assemble bolt and FloorFast through the chequer plate.
- 2) Align castings with the straight edge parallel to the edge of the plate and hand tighten.
- 3) Lay the floorplate into position.
- 4) Using a hexagon key release countersunk screw one full turn.
- 5) Tighten down the countersunk socket screw.

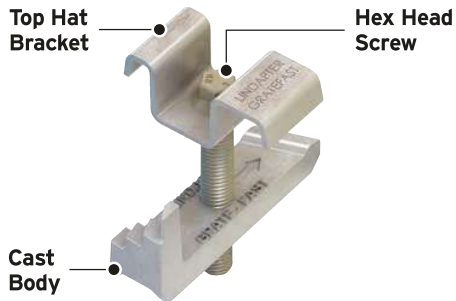
▶ Watch the installation video at www.Lindapter.com

Removal: Using a hexagon key, give the FloorFast one full anti-clockwise turn to release the connection from the flange.

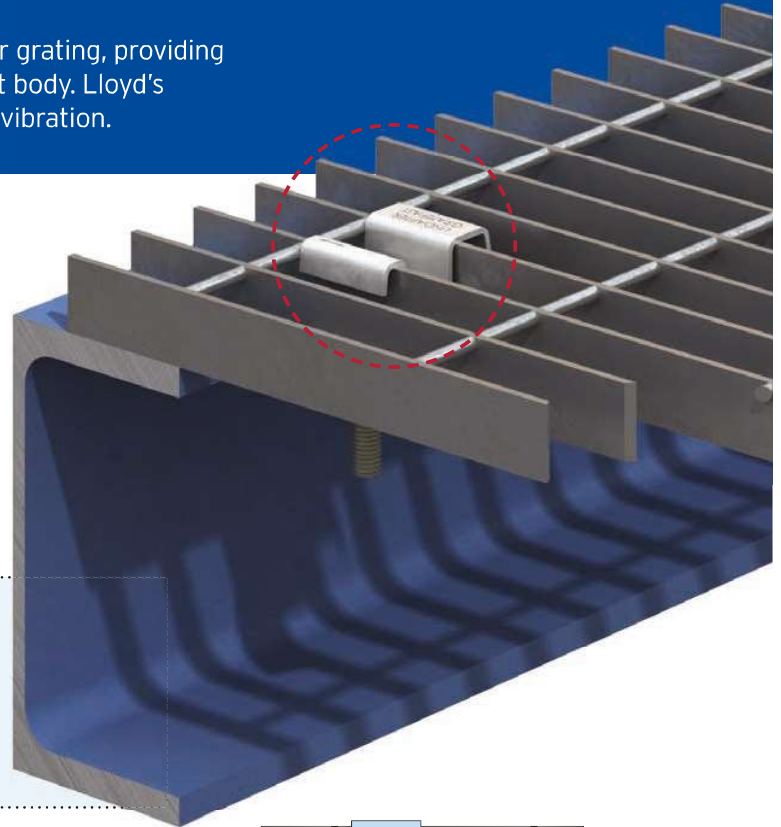
CE For Characteristic Resistances when designing a connection to Eurocode 3, please refer to DoP No.013 on the website www.Lindapter.com/About/CE

Type GF - Grate-Fast®

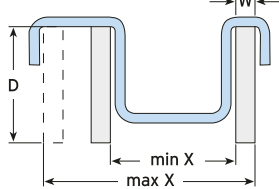
A high strength floor fixing for rectangular open bar grating, providing superior clamping force due to a malleable iron cast body. Lloyd's Register Type Approval for resistance to shock and vibration.



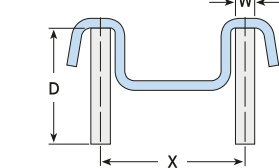
- **GF08** for GRP grating with stainless steel top hat bracket, Sheraplex coated body and socket head screw.
- **GF10HDG** is hot dip galvanised for increased corrosion resistance.
- **GF210HDG** is hot dip galvanised for use with 30mm width floor grating bars only.



GF08 / GF10HDG



GF210HDG



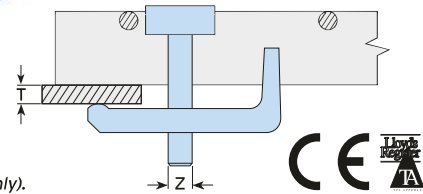
Material:

Top Hat: Stainless steel grade 304 (GF08 only).

Mild Steel, hot dip galvanised (GF10HDG & GF210HDG only).

Body: Malleable iron, Sheraplex (GF08 only).

Malleable iron, hot dip galvanised (GF10HDG & GF210HDG only).



Product Code	Bolt 8.8 Z	Flange T mm	Grating Bar Depth D mm	Grating Bar Width W mm	Bar Distance X mm	Tightening Torque Nm	Across Flats mm
GF08¹⁾	M8	3 - 19	22 - 38	5 - 10	19 - 48	5	6
GF10HDG²⁾	M10	3 - 19	20 - 50	3 - 7	25 - 45	11	10
GF210HDG²⁾	M10	3 - 19	19 - 40	3 - 6.5	30	11	10

1) Supplied with socket head cap screw.

2) Supplied with hex head screw.

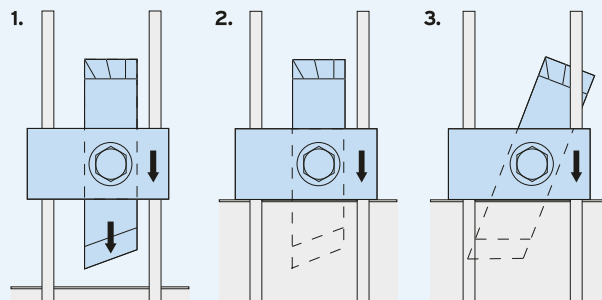
➔ Designed for pedestrian walkways only.



How to install...

▶ Watch the installation video at www.Lindapter.com

- 1) Position pre-assembled Grate-Fast with the body between the grating bars and the nose pointing towards the steelwork. The arrows on the top hat bracket should also be pointing towards the supporting steelwork and the bracket itself resting on the bearing bars.
- 2) Slide the Grate-Fast towards the steelwork until the nose fits under the beam flange. Where necessary adjust body / screw to the approximate flange thickness / grating depth.
- 3) Tighten the screw. The Grate-Fast body will automatically rotate until it locks under the bearing bar, with the nose under the flange. Tighten to the recommended torque.

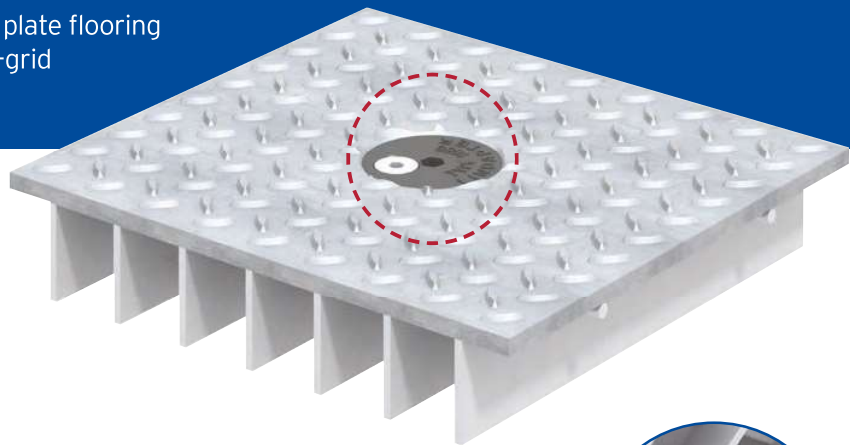
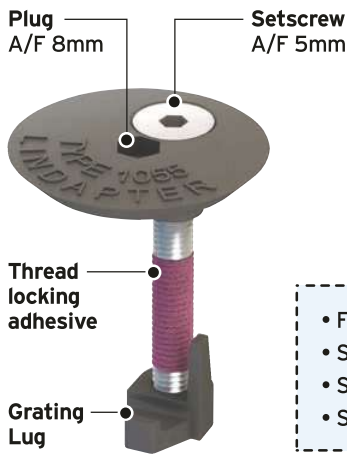


For Characteristic Resistances when designing a connection to Eurocode 3, please refer to DoP No.014 on the website www.Lindapter.com/About/CE

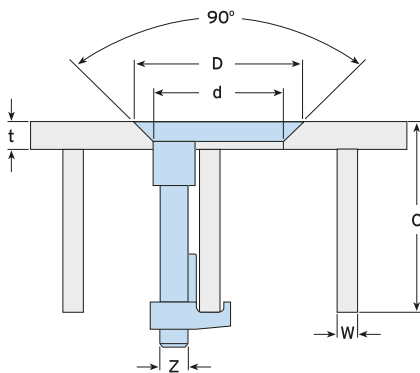
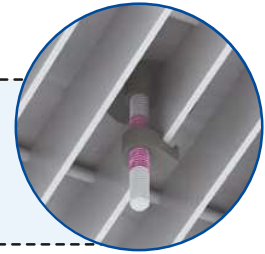


Type 1055

This unique solution enables solid plate flooring to be fitted to open-mesh or open-grid flooring using simple hand tools.



- Fast installation from above, no need for expensive scaffolding.
- Stainless steel for high corrosion resistance.
- Superior clamping force from high quality castings.
- Safely retrofit without welding, no need for hot work permits.



Material: Cast stainless steel, self colour.

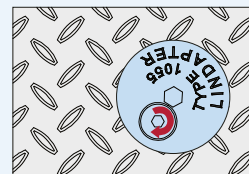
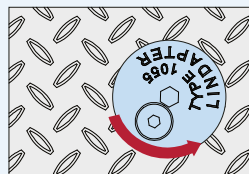


Product Code	Bolt A4-70 Z	Floorplate Thickness t mm	Clamping Range C mm	Grating Bar Width W mm	Hole Ø d mm	Counter-sunk Ø D mm	Setscrew	
							Tight. Torque Nm	Hex. Key mm
FG1055	M8	min. 6	35 - 56	3 - 8	40	50	11	5

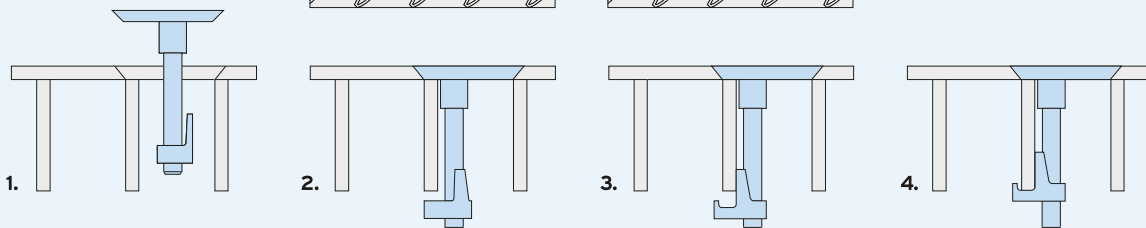
➤ Designed for pedestrian walkways only.



How to install...



Watch the installation video at www.Lindapter.com



- 1) Insert the pre-assembled Type 1055 into the countersunk hole between the grating bars.
- 2) Use an 8mm hexagon key to rotate the plug anti-clockwise until the underside of the plug locates against the grating bar.
- 3) Use a 5mm hexagon key to rotate the countersunk setscrew clockwise until the grating lug makes contact with the grating bar.
- 4) Tighten the setscrew to 11Nm; the grating lug will be drawn up the screw and will activate the thread locking adhesive.



For Characteristic Resistances when designing a connection to Eurocode 3, please refer to DoP No.015 on the website www.Lindapter.com/About/CE